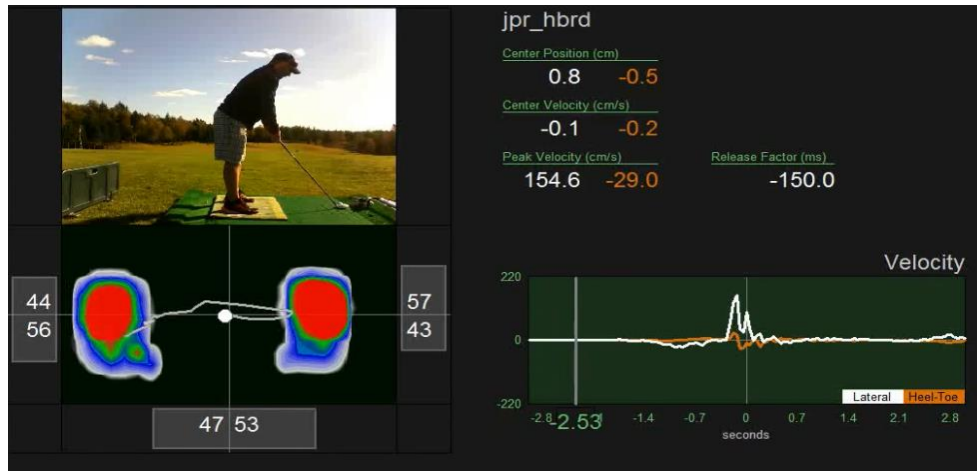




Randy Wexter utilizes **BodiTrak** pressure mapping at his Golf Academy at SPG Green Garden Country Club.



BodiTrak is "A thin, portable system for capturing center balance during a golf swing."

It captures a golfer's balance pattern Indoors, Outdoors, Uphill, Downhill, On the putting green and In the sand trap. It's flexible, roll up design makes it very easy to setup, use and move to the next hole or golf course. Used in conjunction with the V-1 Video System, **BodiTrak** syncs with your golf swing video for a complete scientific assessment of your golf swing.

BodiTrak balance systems have been used for nearly a decade in rehabilitation medicine research.

